

# LGE-TALK: NOVEMBER



Written By : Gianmaria Bernacchia

## Intelligent Tracker: Revolutionizing Business Monitoring

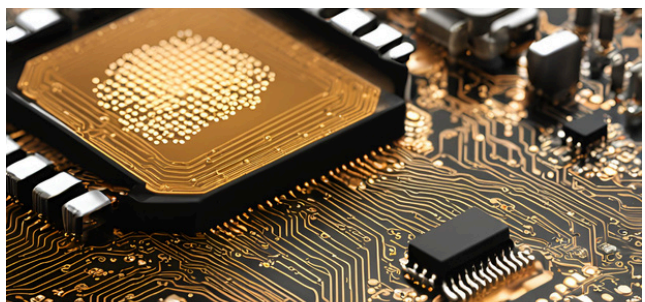
Luna Geber Engineering's Intelligent Tracker is transforming business operations with real-time data monitoring. This advanced system enhances efficiency and reduces costs, making it a popular choice among companies. Recent studies show a significant increase in productivity and resource management for businesses adopting this technology. Discover how Intelligent Tracker can elevate your operational efficiency.

### ● IoT: Driving the Future of Industry 5.0 and Decision-Making

The Internet of Things (IoT) is at the forefront of Industry 5.0, transforming how businesses operate and make decisions. By integrating smart devices and AI, IoT enables real-time data collection and analysis, leading to more informed and efficient decision-making processes. This technological synergy enhances productivity, innovation, and sustainability, marking a significant shift in the industrial landscape.

Luna Geber Engineering is a cutting-edge company dedicated to applying state-of-the-art technologies across various sectors. With a relentless commitment to innovation, LGE excels in transforming advanced ideas into practical and efficient solutions.

[Read More on our website](#)



## Intelligent Tracker: Revolutionizing Business Monitoring

In the modern business world, operational efficiency and optimal resource management are crucial for success. Luna Geber Engineering, with its innovative Intelligent Tracker, is revolutionizing the way companies monitor and manage their operations. This article explores how the Intelligent Tracker is transforming various sectors, improving productivity, and reducing costs.



### Revolutionizing Business Operations with Intelligent Tracker

In today's fast-paced business environment, staying ahead of the competition requires innovative solutions that enhance efficiency and reduce operational costs. Luna Geber Engineering (LGE) has developed such a solution with their Intelligent Tracker, a state-of-the-art system designed to provide real-time data monitoring and transform business operations.

#### What is Intelligent Tracker?

The Intelligent Tracker is more than just a tracking device; it's a comprehensive platform that integrates seamlessly into various business processes. It offers real-time monitoring of assets, vehicles, and other critical components, ensuring that companies have a clear and immediate understanding of their operations. This advanced system is highly flexible and expandable, capable of hosting a wide range of sensors and actuators to meet diverse business needs.

#### Benefits of Intelligent Tracker

One of the primary advantages of the Intelligent Tracker is its ability to enhance operational efficiency. By providing real-time data, businesses can make informed decisions quickly, reducing downtime and optimizing resource allocation. This leads to significant cost savings and improved productivity.

[Read More on our website](#)



Recent studies have shown that companies adopting this technology experience notable improvements in both productivity and resource management.

### **Use Cases**

The versatility of the Intelligent Tracker is evident in its wide range of applications across different industries. Here are a few examples:

- **Automotive Industry:** A used car dealership with a fleet of 2,000 vehicles struggled to maintain a comprehensive overview of each vehicle's status. By implementing the Intelligent Tracker, they developed a customized platform that allows them to monitor every detail, optimizing vehicle management and overall efficiency<sup>1</sup>.
- **Container Rental Services:** A company managing 450 containers lacked a unified system to track their assets spread across various locations. The Intelligent Tracker provided a personalized platform that displays all containers on a map and sends alerts when it's time to collect them, significantly improving logistics and asset management<sup>1</sup>.
- **Telecommunications:** A telecom company with a fleet of 1,000 vehicles faced challenges in coordinating between vehicles. The Intelligent Tracker created a dedicated platform that enables vehicles to identify nearby units, request tools or assistance, and transform the fleet into a cooperative network, enhancing efficiency and collaboration<sup>1</sup>.

### **Why Choose Luna Geber Engineering?**

Luna Geber Engineering is a cutting-edge company dedicated to applying state-of-the-art technologies across various sectors. With a relentless commitment to innovation, LGE excels in transforming advanced ideas into practical and efficient solutions. Their Intelligent Tracker is a testament to their expertise and dedication to improving business operations.

### **Conclusion**

The Intelligent Tracker by Luna Geber Engineering is revolutionizing the way businesses operate. By providing real-time data monitoring, it enhances efficiency, reduces costs, and supports informed decision-making. As more companies adopt this technology, the benefits become increasingly evident, making the Intelligent Tracker an essential tool for modern business operations. Discover how the Intelligent Tracker can elevate your operational efficiency and transform your business today.

*[Read More on our website](#)*

## IoT: Driving the Future of Industry 5.0 and Decision-Making

In the modern industrial landscape, the Internet of Things (IoT) stands at the forefront of Industry 5.0, revolutionizing how businesses operate and make decisions. By integrating smart devices and artificial intelligence (AI), IoT enables real-time data collection and analysis, leading to more informed and efficient decision-making processes. This technological synergy enhances productivity, innovation, and sustainability, marking a significant shift in the industrial landscape.



### Transforming Business Operations

IoT devices, equipped with advanced sensors and connectivity, collect vast amounts of data from various sources. This data is then processed and analyzed using AI algorithms, providing businesses with actionable insights. For instance, Luna Geber Engineering's Intelligent Tracker allows companies to monitor their assets in real-time, optimizing resource management and operational efficiency<sup>1</sup>. This real-time monitoring capability is crucial for industries such as manufacturing, logistics, and automotive, where timely information can significantly impact productivity and cost savings.

#### Enhancing Productivity and Innovation

The integration of IoT and AI fosters a culture of continuous improvement and innovation. By automating routine tasks and providing predictive maintenance insights, businesses can reduce downtime and enhance productivity. For example, in the automotive sector, IoT-enabled devices can monitor vehicle performance and predict maintenance needs, preventing costly breakdowns and extending the lifespan of assets<sup>1</sup>. This proactive approach not only improves operational efficiency but also drives innovation by enabling companies to develop new, data-driven business models.

*[Read More on our website](#)*



### **Promoting Sustainability**

Sustainability is a core component of Industry 5.0, and IoT plays a pivotal role in achieving this goal. By optimizing resource usage and reducing waste, IoT solutions contribute to more sustainable business practices. Luna Geber Engineering, for instance, focuses on developing eco-friendly monitoring systems that minimize environmental impact<sup>2</sup>. These systems help companies track their energy consumption, monitor emissions, and implement more sustainable practices, aligning with global sustainability goals.

### **Conclusion**

The convergence of IoT and AI in Industry 5.0 is transforming the way businesses operate, making them more efficient, innovative, and sustainable. Companies like Luna Geber Engineering are at the forefront of this transformation, providing cutting-edge solutions that help businesses navigate the complexities of the modern industrial landscape. As IoT technology continues to evolve, its impact on business operations will only grow, paving the way for a smarter, more connected future.

*[Read More on our website](#)*